



NEWSLETTER JANUARY 2017

Please share internally with interested colleagues ...

INSIDE THIS ISSUE:

- ⊙ ISO/TS 22163 – the Highlights
- ⊙ IRIS Academy: Seminar Calendar 2017
- ⊙ Your way to become a QM SPECIAL ENGINEER with Diploma

Dear reader, please take 5' of your time. It is worth ...

Railway standard IRIS becomes international recognizes ISO/TS 22163 standard

From now on and forever, ISO 22163 is the official identification of the requirements part for a Rail Quality Management System, going to be published as an ISO/TS 22163 standard by May 2017. At the same time, the IRIS group will issue the new certification rules in IRIS Rev. 5/2017.

But how to remember this number? It's easy for one, who was born on January, 22nd 1963. And for all others, we add a **vCard**, which you can save using the nice name IRIS in your contacts. Inside is all worth knowing.

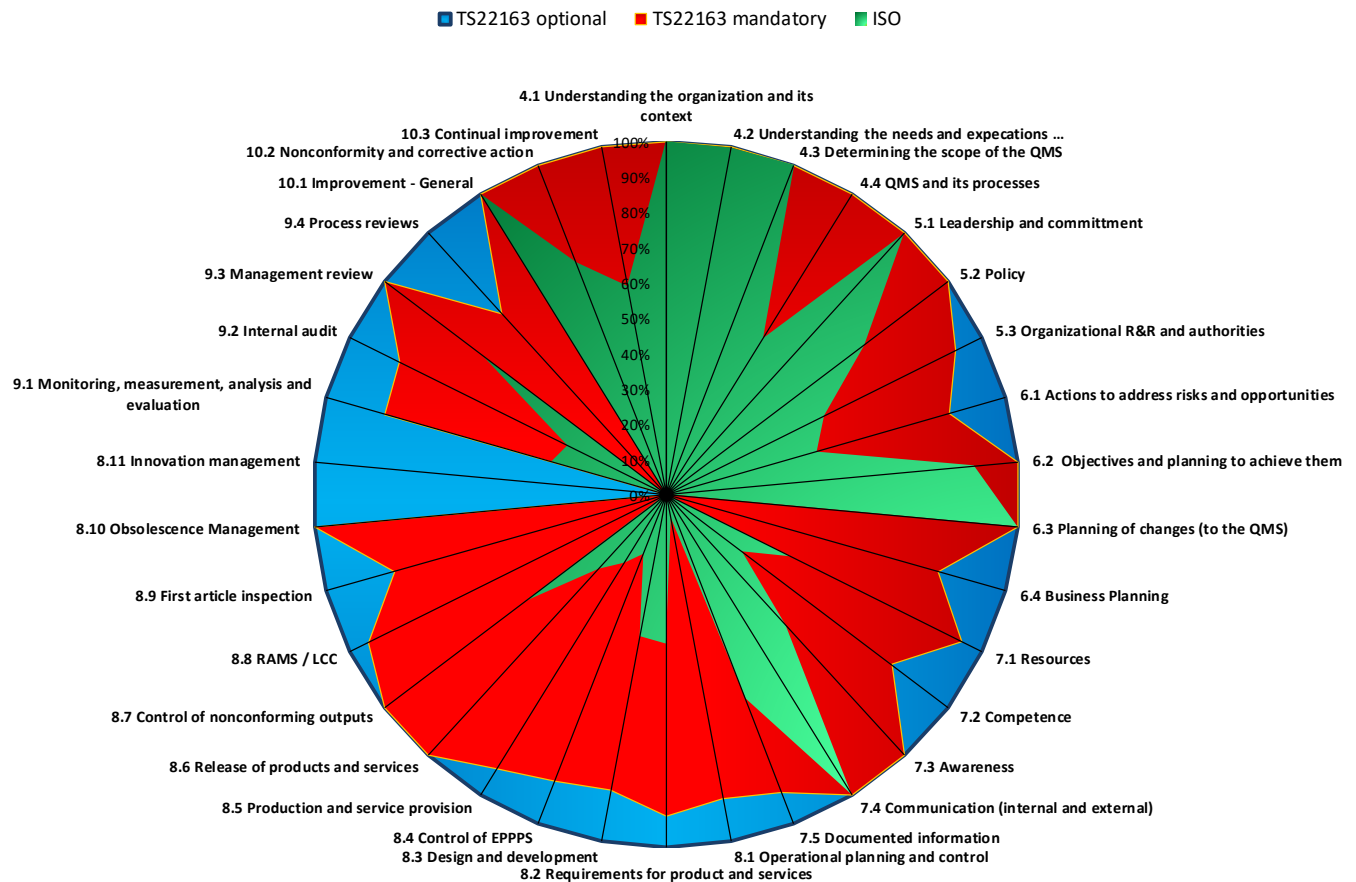
Here are just a few highlights to understand that there are significant new challenges ahead. We advise to familiarize with the new requirements as soon as possible. Otherwise, the risk of not being able to maintain an existing IRIS certificate could be very high. Do not put your "entrance ticket" into the railway business at risk.

The new ISO/TS 22163: 2017 standard:

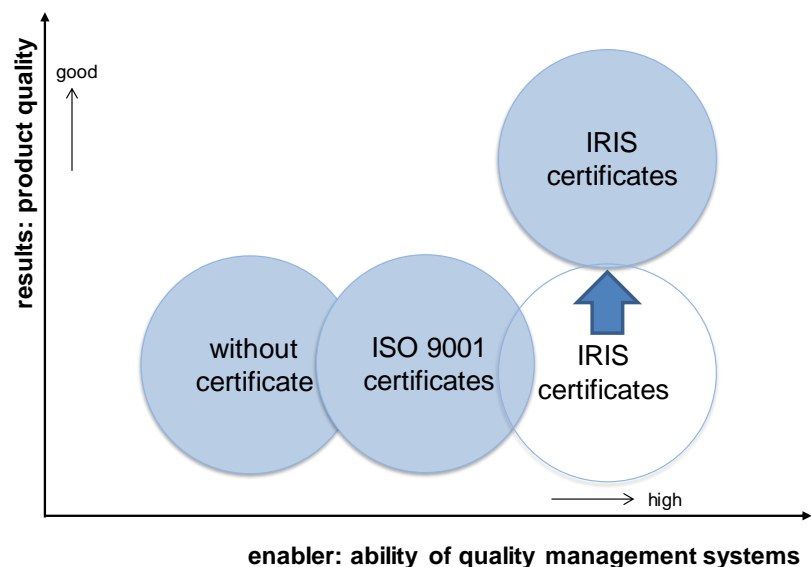
- will be published in May 2017 and will replace the existing IRIS Rev.2.01, till September 2018,
- covers all requirements of ISO 9001:2015 and has been built according to the High-Level Structure, supplemented by existing and new additional mandatory and optional requirements of the rail industry, especially also new KPIs,
- continues to be supported by the "IRIS Audit Tool" that is based on the new IRIS Assessment Sheet, composed by around 870 mandatory requirements, which are grouped into about 300 questions, as well as new KO-requirements (plus additional optional requirements),
- requires the appraisal of the customer focus performance level,
- requires introduction of turtle diagrams and applies the methodology of Process Effectiveness Assessment Reviews (PEAR) for some mandatory processes,
- utilizes a scoring matrix concluding your companies BRONZE-SILVER-GOLD rating.

Interested in getting more information? Then please read the following pages.

The radar chart illustrates the differences between ISO 9001:2015 and the requirements of ISO/TS 22163. Currently it covers the requirements of the ISO/TS text only. When the new assessment sheet will be published in May (via the revised IRIS audit tool), additional optional requirements will come on top.



Now, the requirements of TS 22163 (comparable to today's IRIS chapter 3) together with IRIS Rev. 5/2017 (today's chapters 1 and 2) should raise IRIS to a premium certificate, that also includes a statement regarding the product quality! Probably, due to such high ambitions of the next generation, the transition won't become an easy walk. Indeed, today a company can have an excellent quality management system, but whether everyone adheres to the processes and thus the product or service quality fits to customer expectations, unfortunately, this isn't guaranteed even with an IRIS certificate. And this will change.



The new objectives are illustrated in the right picture:

Are you ready for challenges? We will help you, please read on ...

IRIS Academy: Seminar Calendar 2017

We come to your region and prepare you for the new requirements in an optimal way. For further details, please refer to the course overview below. The descriptions in the right column contain links to further explanations.

When you are interested in a particular seminar, please pick the course number and visit our [webpage](http://www.cc-rail.info/en/academy/) (<http://www.cc-rail.info/en/academy/>). Using the course numbers, you will find there under "Details" the respective course descriptions with the exact dates, the times for the start at the first days and the end at the last days, the training venues, the course fees and the booking deadlines.

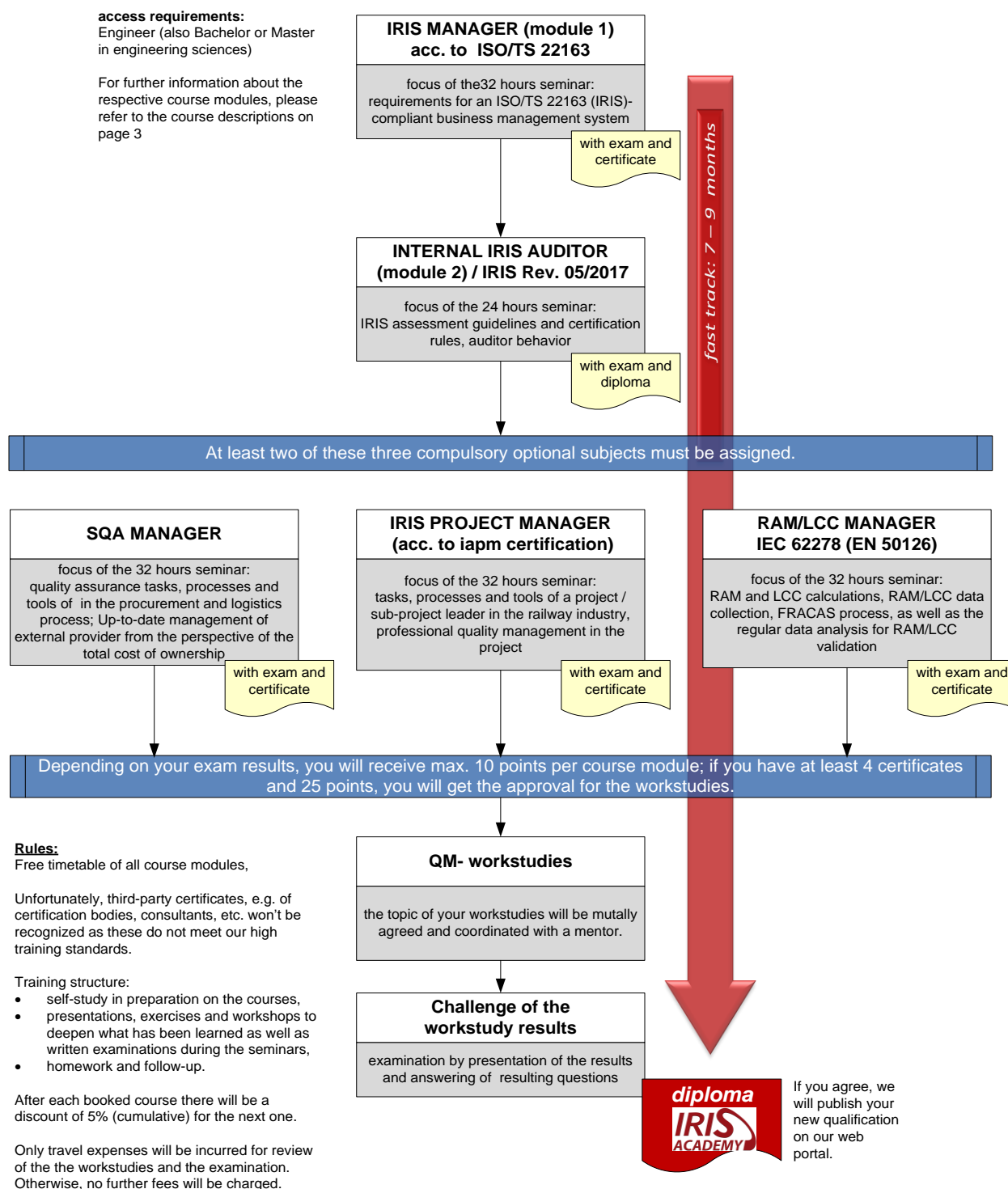
Also, all training offers can be globally requested as in-house seminars with special package prizes.



Seminar name	February	March	April	May	June	October	November	Description
Preparation for next IRIS revision (ISO/TS 22163)	133 Zagreb	SORRY! SOLD OUT		134 Pittsburgh	135 Pittsburgh			In these preparation courses you will familiarize with the requirements of the new ISO/TS 22163 before the publication of the standard. ... please read more in the seminar descriptions (details)
IRIS MANAGER (module 1)					138 Frankfurt	146 Lyon	149 Wroclaw	This courses focuses on all mandatory and optional requirements of the new ISO/TS 22163 norm please read more
					147 Bilbao		151 Italy	
INTERNAL IRIS AUDITOR (module 2)							152 Italy	This seminar module follows the "IRIS Manager" and includes the new certification rules and many other vip topics ... please read more
RAM / LCC MANAGER		130 Berlin				145 Frankfurt		The course provides application notes, information about execution of RAM/LCC-requirements in acc. with the EN 50126, FRACAS and much more. ... please read more
IRIS PROJECT MANAGER						148 Bilbao		The course contents are designed in accordance with iapm-guide2.0 and deepen all the requirements of ISO/TS 22163 regarding Project Management ... please read more
SQA MANAGER	NEW						150 Prague	This new seminar provides all the supplier QA - and supplier performance management methods and tools that you can use immediately ... please read more

Your way to become a QM SPECIAL ENGINEER with diploma

There are many good reasons to choose us, only one of them is our practice orientation and diversity on all fields of quality management in the rail industry. Now, the certificates of the IRIS Academy enjoy the highest recognition worldwide. Hence, why not to take advantage of our seminar offers and achieve the qualification as a QM Special Engineer (IRIS Academy)?



We hope that our newsletter could provide some new information and useful suggestions to you.
With best regards, your CC-Rail Team (info@cc-rail.com)